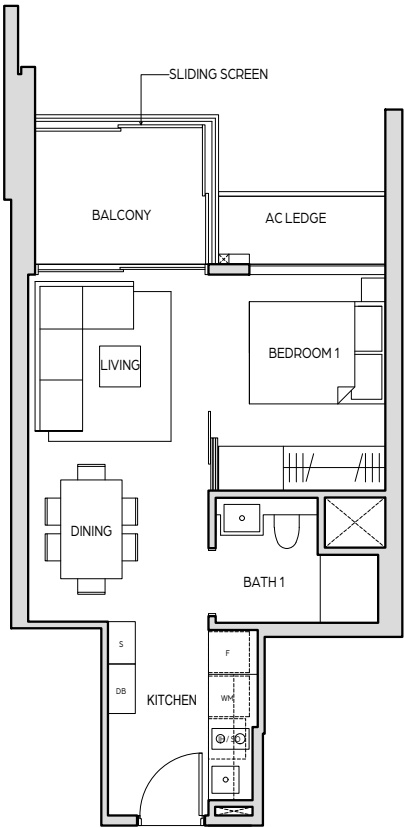


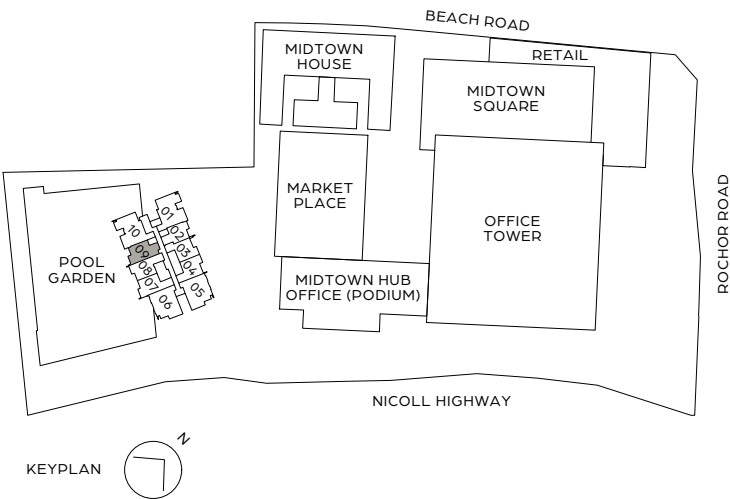
1 BEDROOM

TYPE A1
44 sq m / 474 sq ft
#08-09 to #24-09



LEGEND (WHERE APPLICABLE)

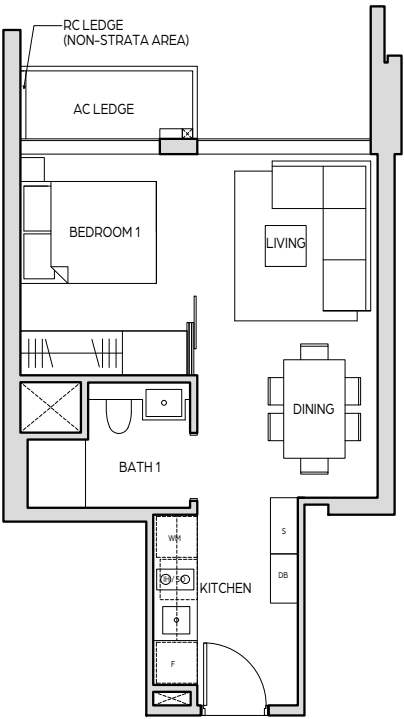
- | | |
|-----------------------------|--------------------------------|
| F – FRIDGE | DB – DISTRIBUTION BOARD |
| WM – WASHING MACHINE | IH – INDUCTION HOB |
| S – STORAGE | SO – STEAM OVEN |



All areas and measurements stated in this floor plan are approximate and subject to final survey. The layout / location of wardrobes, kitchen cabinets and appliances, DB, door swing directions and sanitary wares are subject to final design. BP Approval No. A1606-00001-2018-BP02 dated 10 June 2019

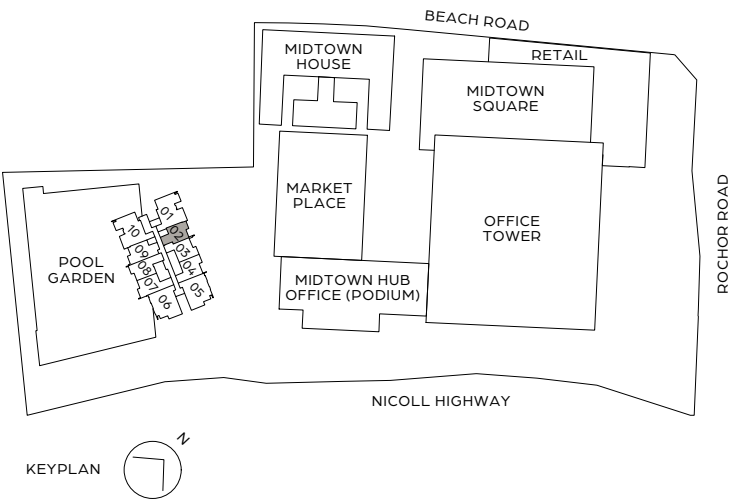
1 BEDROOM

TYPE A1a
38 sq m / 409 sq ft
#07-02 to #24-02



LEGEND (WHERE APPLICABLE)

- | | |
|-----------------------------|--------------------------------|
| F – FRIDGE | DB – DISTRIBUTION BOARD |
| WM – WASHING MACHINE | IH – INDUCTION HOB |
| S – STORAGE | SO – STEAM OVEN |



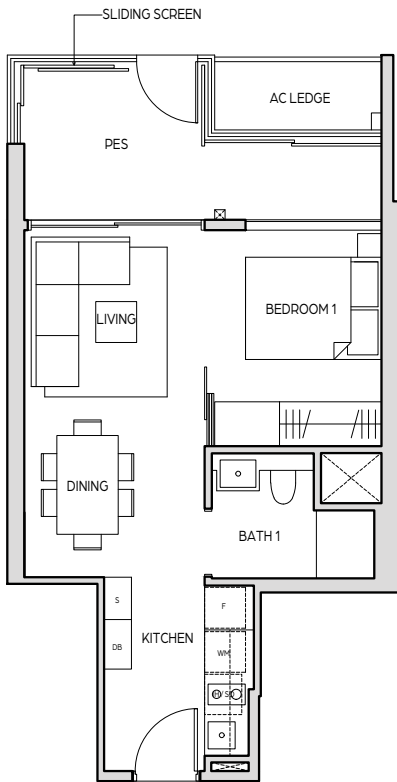
All areas and measurements stated in this floor plan are approximate and subject to final survey. The layout / location of wardrobes, kitchen cabinets and appliances, DB, door swing directions and sanitary wares are subject to final design. BP Approval No. A1606-00001-2018-BP02 dated 10 June 2019

1 BEDROOM

TYPE A1-G

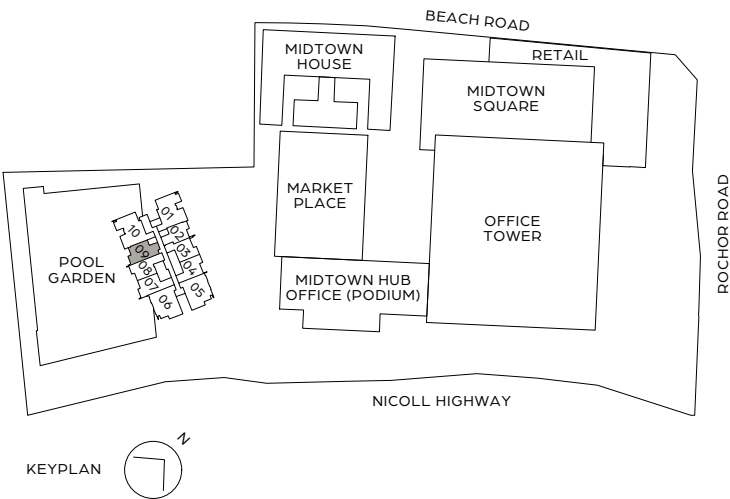
48 sq m / 517 sq ft

#07-09



LEGEND (WHERE APPLICABLE)

- | | |
|-----------------------------|--------------------------------|
| F – FRIDGE | DB – DISTRIBUTION BOARD |
| WM – WASHING MACHINE | IH – INDUCTION HOB |
| S – STORAGE | SO – STEAM OVEN |



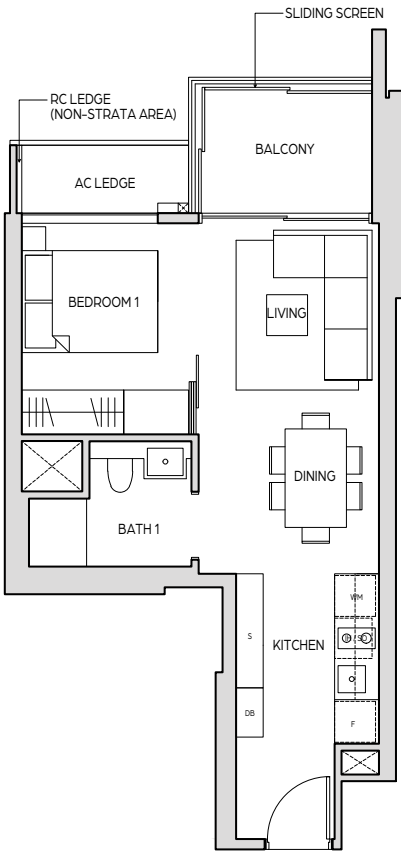
All areas and measurements stated in this floor plan are approximate and subject to final survey. The layout / location of wardrobes, kitchen cabinets and appliances, DB, door swing directions and sanitary wares are subject to final design. BP Approval No. A1606-00001-2018-BP02 dated 10 June 2019

1 BEDROOM

TYPE A2

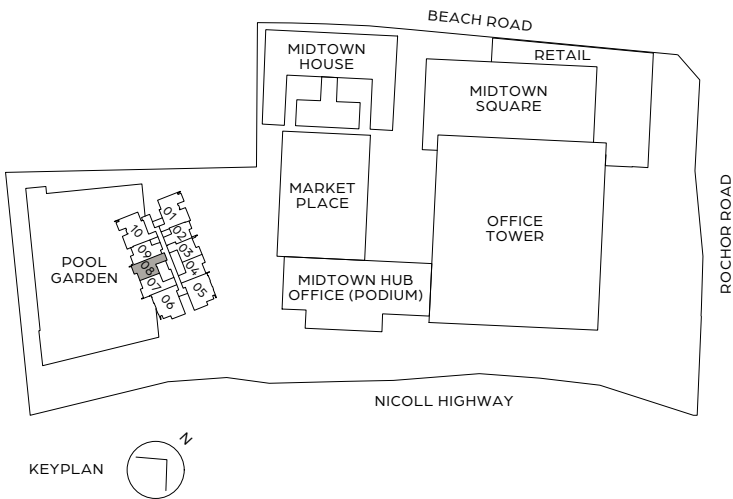
45 sq m / 484 sq ft

#08-08 to #24-08



LEGEND (WHERE APPLICABLE)

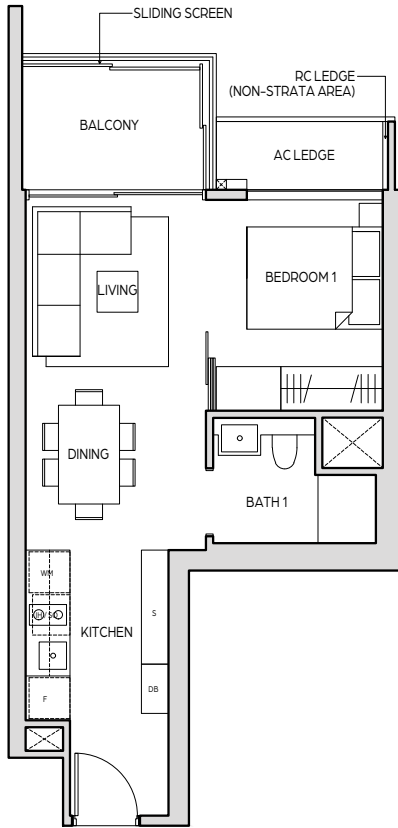
- | | |
|-----------------------------|--------------------------------|
| F – FRIDGE | DB – DISTRIBUTION BOARD |
| WM – WASHING MACHINE | IH – INDUCTION HOB |
| S – STORAGE | SO – STEAM OVEN |



All areas and measurements stated in this floor plan are approximate and subject to final survey. The layout / location of wardrobes, kitchen cabinets and appliances, DB, door swing directions and sanitary wares are subject to final design. BP Approval No. A1606-00001-2018-BP02 dated 10 June 2019

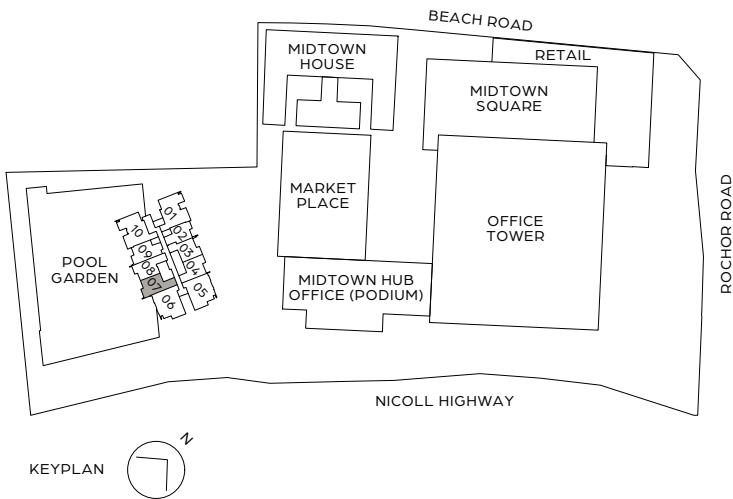
1 BEDROOM

TYPE A2a
45 sq m / 484 sq ft
#08-07 to #24-07



LEGEND (WHERE APPLICABLE)

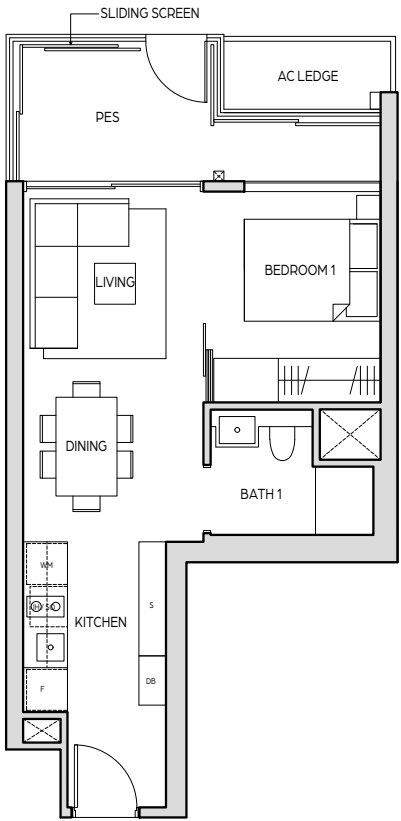
- | | |
|-----------------------------|--------------------------------|
| F – FRIDGE | DB – DISTRIBUTION BOARD |
| WM – WASHING MACHINE | IH – INDUCTION HOB |
| S – STORAGE | SO – STEAM OVEN |



All areas and measurements stated in this floor plan are approximate and subject to final survey. The layout / location of wardrobes, kitchen cabinets and appliances, DB, door swing directions and sanitary wares are subject to final design. BP Approval No. A1606-00001-2018-BP02 dated 10 June 2019

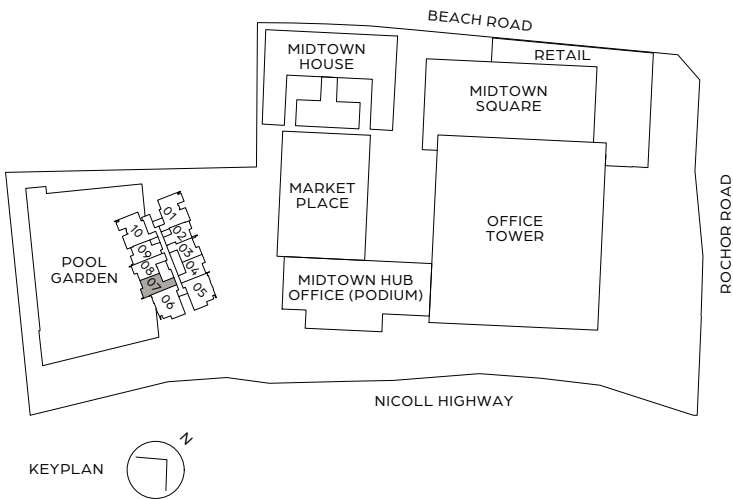
1 BEDROOM

TYPE A2a-G
49 sq m / 527 sq ft
#07-07



LEGEND (WHERE APPLICABLE)

- | | |
|-----------------------------|--------------------------------|
| F – FRIDGE | DB – DISTRIBUTION BOARD |
| WM – WASHING MACHINE | IH – INDUCTION HOB |
| S – STORAGE | SO – STEAM OVEN |



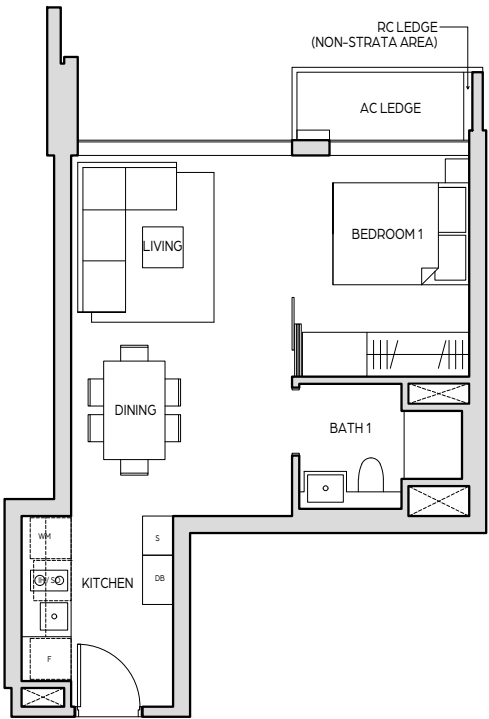
All areas and measurements stated in this floor plan are approximate and subject to final survey. The layout / location of wardrobes, kitchen cabinets and appliances, DB, door swing directions and sanitary wares are subject to final design. BP Approval No. A1606-00001-2018-BP02 dated 10 June 2019

1 BEDROOM

TYPE A3

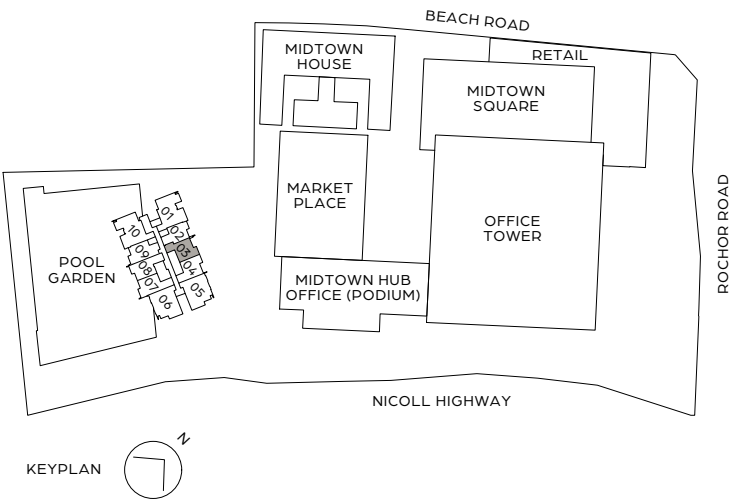
43 sq m / 463 sq ft

#07-03 to #24-03



LEGEND (WHERE APPLICABLE)

- | | |
|-----------------------------|--------------------------------|
| F – FRIDGE | DB – DISTRIBUTION BOARD |
| WM – WASHING MACHINE | IH – INDUCTION HOB |
| S – STORAGE | SO – STEAM OVEN |



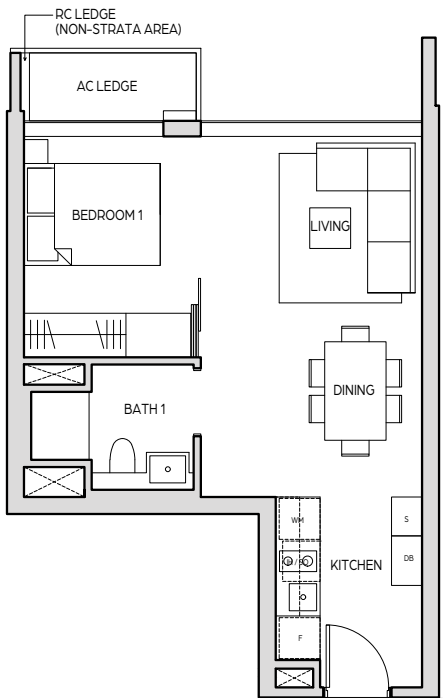
All areas and measurements stated in this floor plan are approximate and subject to final survey. The layout / location of wardrobes, kitchen cabinets and appliances, DB, door swing directions and sanitary wares are subject to final design. BP Approval No. A1606-00001-2018-BP02 dated 10 June 2019

1 BEDROOM

TYPE A3a

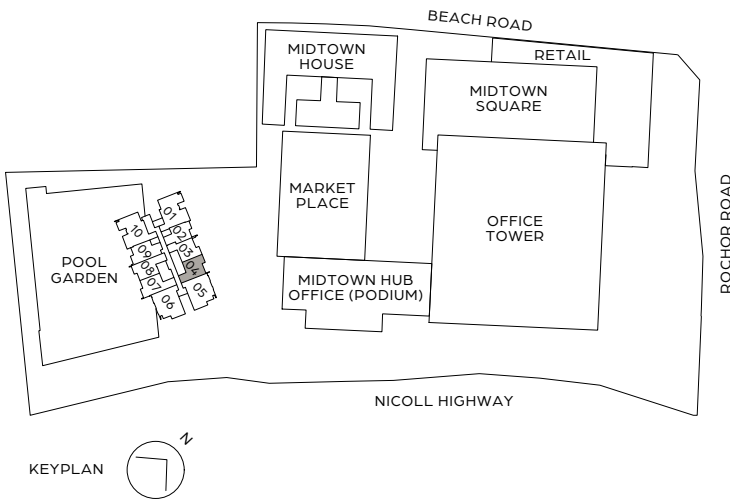
42 sq m / 452 sq ft

#07-04 to #24-04



LEGEND (WHERE APPLICABLE)

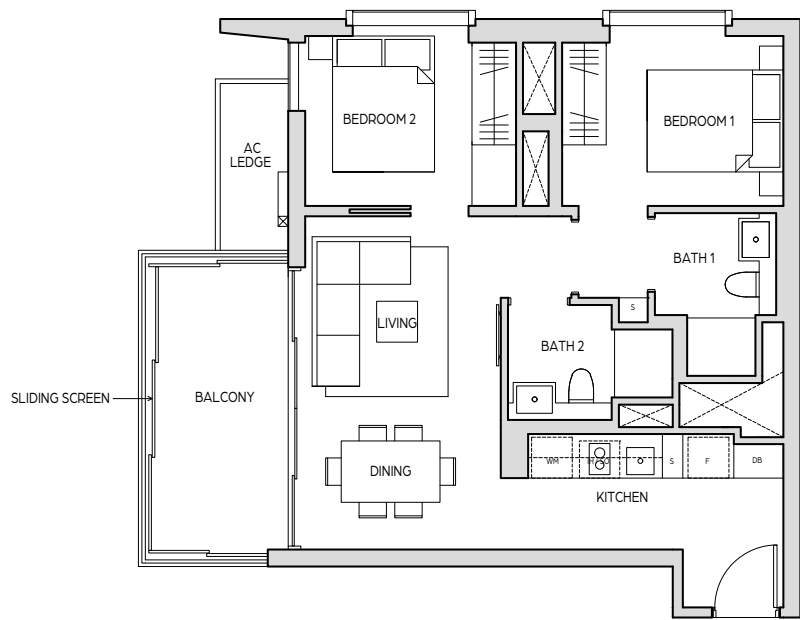
- | | |
|-----------------------------|--------------------------------|
| F – FRIDGE | DB – DISTRIBUTION BOARD |
| WM – WASHING MACHINE | IH – INDUCTION HOB |
| S – STORAGE | SO – STEAM OVEN |



All areas and measurements stated in this floor plan are approximate and subject to final survey. The layout / location of wardrobes, kitchen cabinets and appliances, DB, door swing directions and sanitary wares are subject to final design. BP Approval No. A1606-00001-2018-BP02 dated 10 June 2019

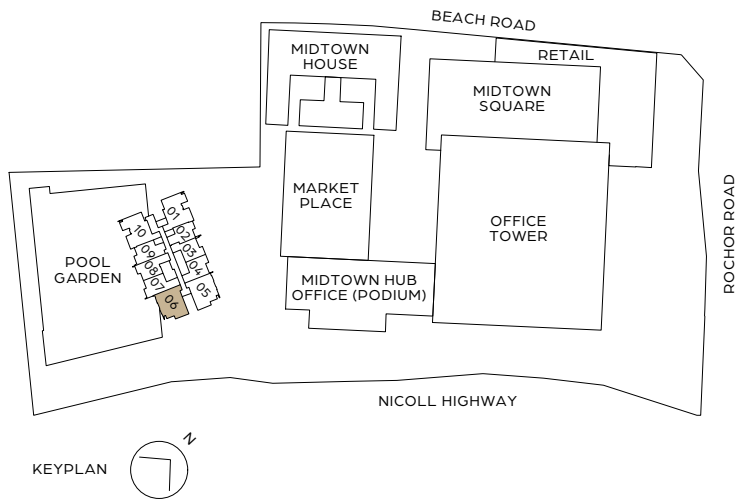
2 BEDROOM

TYPE B1
68 sq m / 732 sq ft
#07-06 to #24-06



LEGEND (WHERE APPLICABLE)

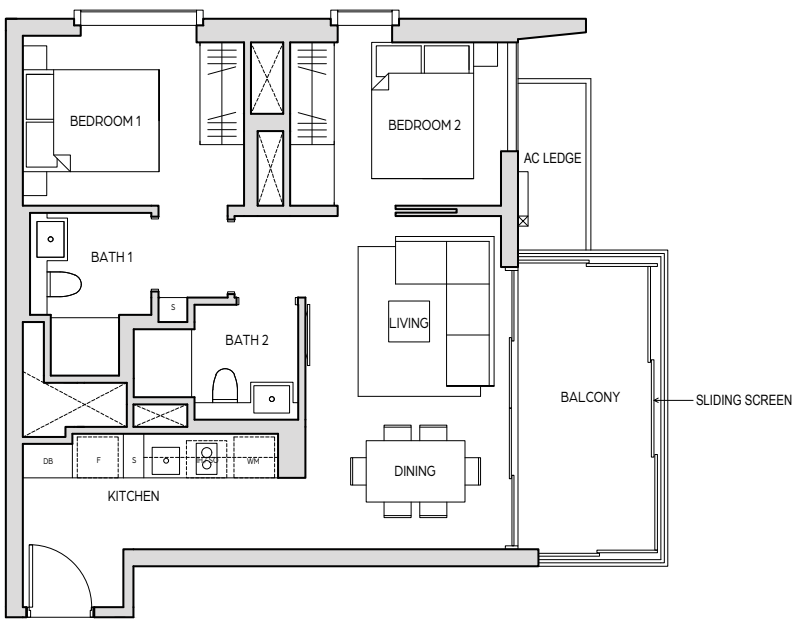
- | | | | |
|----|-------------------|----|----------------------|
| F | - FRIDGE | DB | - DISTRIBUTION BOARD |
| WM | - WASHING MACHINE | IH | - INDUCTION HOB |
| S | - STORAGE | SO | - STEAM OVEN |



All areas and measurements stated in this floor plan are approximate and subject to final survey. The layout / location of wardrobes, kitchen cabinets and appliances, DB, door swing directions and sanitary wares are subject to final design. BP Approval No. A1606-00001-2018-BP02 dated 10 June 2019

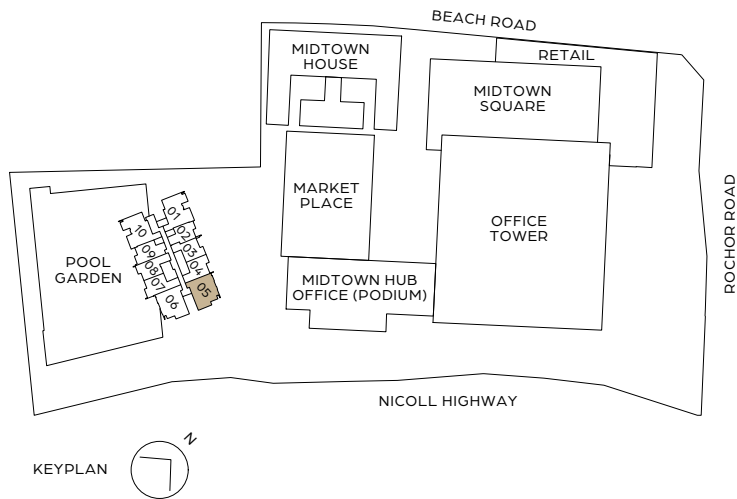
2 BEDROOM

TYPE B1a
68 sq m / 732 sq ft
#07-05 to #24-05



LEGEND (WHERE APPLICABLE)

- | | | | |
|----|-------------------|----|----------------------|
| F | - FRIDGE | DB | - DISTRIBUTION BOARD |
| WM | - WASHING MACHINE | IH | - INDUCTION HOB |
| S | - STORAGE | SO | - STEAM OVEN |



All areas and measurements stated in this floor plan are approximate and subject to final survey. The layout / location of wardrobes, kitchen cabinets and appliances, DB, door swing directions and sanitary wares are subject to final design. BP Approval No. A1606-00001-2018-BP02 dated 10 June 2019

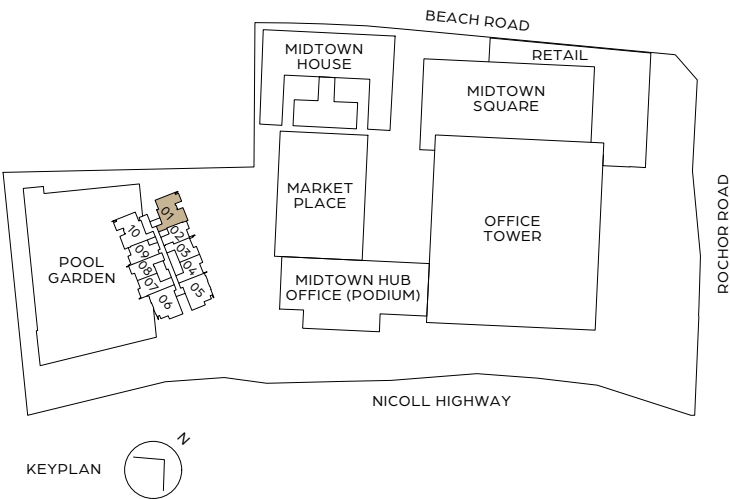
2 BEDROOM

TYPE B2
69 sq m / 743 sq ft
#07-01 to #24-01



LEGEND (WHERE APPLICABLE)

- | | | | |
|----|-------------------|----|----------------------|
| F | - FRIDGE | DB | - DISTRIBUTION BOARD |
| WM | - WASHING MACHINE | IH | - INDUCTION HOB |
| S | - STORAGE | SO | - STEAM OVEN |



All areas and measurements stated in this floor plan are approximate and subject to final survey. The layout / location of wardrobes, kitchen cabinets and appliances, DB, door swing directions and sanitary wares are subject to final design. BP Approval No. A1606-00001-2018-BP02 dated 10 June 2019

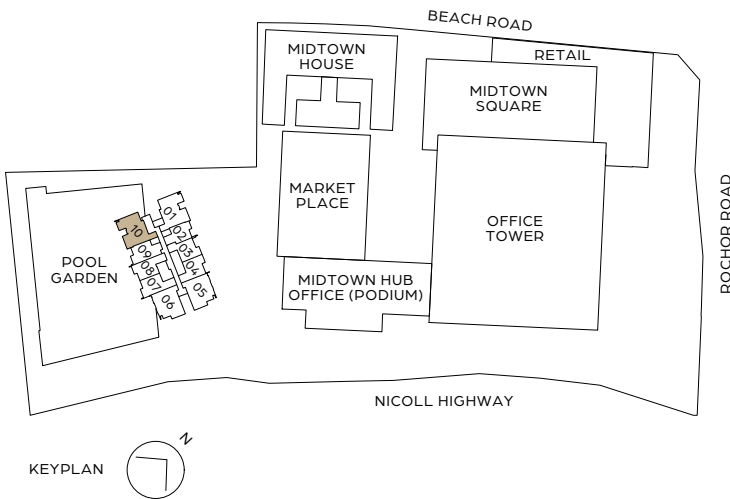
2 BEDROOM

TYPE B3
70 sq m / 753 sq ft
#08-10 to #24-10



LEGEND (WHERE APPLICABLE)

- | | | | |
|----|-------------------|----|----------------------|
| F | - FRIDGE | DB | - DISTRIBUTION BOARD |
| WM | - WASHING MACHINE | IH | - INDUCTION HOB |
| S | - STORAGE | SO | - STEAM OVEN |



All areas and measurements stated in this floor plan are approximate and subject to final survey. The layout / location of wardrobes, kitchen cabinets and appliances, DB, door swing directions and sanitary wares are subject to final design. BP Approval No. A1606-00001-2018-BP02 dated 10 June 2019

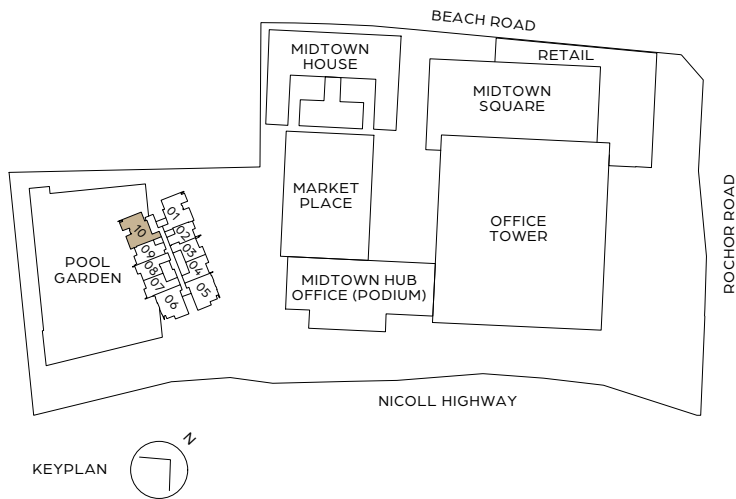
2 BEDROOM

TYPE B3-G
72 sq m / 775 sq ft
#07-10



LEGEND (WHERE APPLICABLE)

- | | | | |
|----|-------------------|----|----------------------|
| F | – FRIDGE | DB | – DISTRIBUTION BOARD |
| WM | – WASHING MACHINE | IH | – INDUCTION HOB |
| S | – STORAGE | SO | – STEAM OVEN |



All areas and measurements stated in this floor plan are approximate and subject to final survey. The layout / location of wardrobes, kitchen cabinets and appliances, DB, door swing directions and sanitary wares are subject to final design. BP Approval No. A1606-00001-2018-BP02 dated 10 June 2019

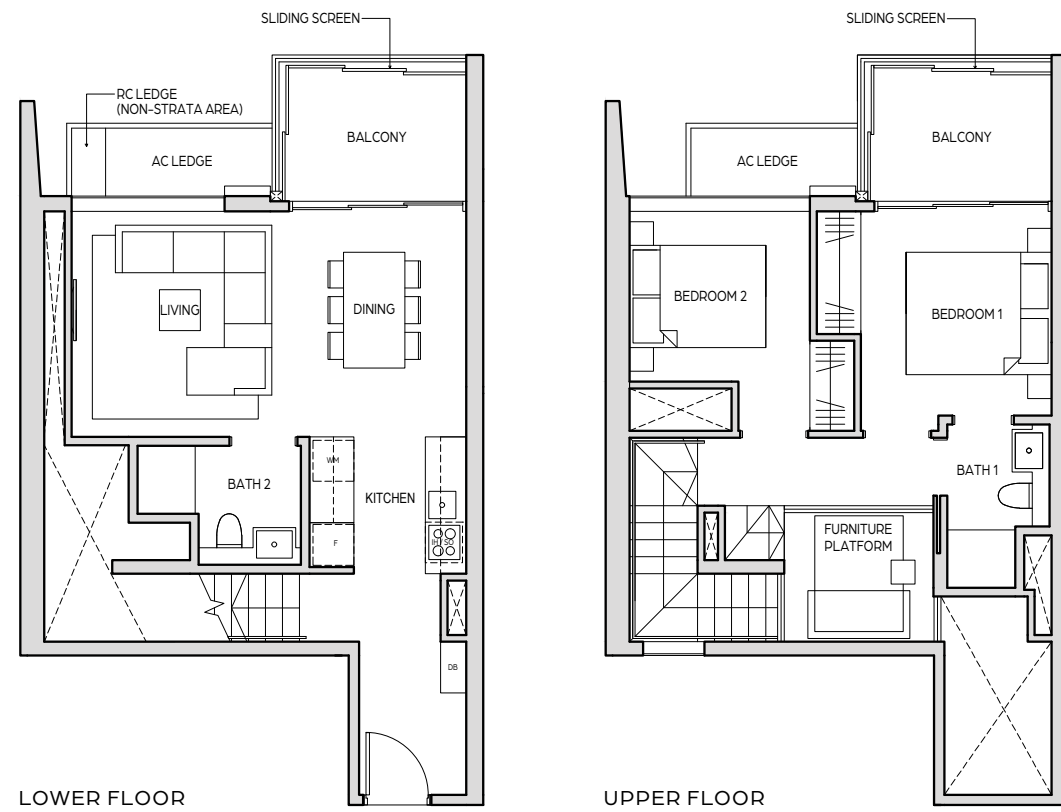


2 BEDROOM DUPLEX

TYPE B2-DP

105 sq m / 1130 sq ft

#26-01 | #28-01 | #30-01 | #32-01



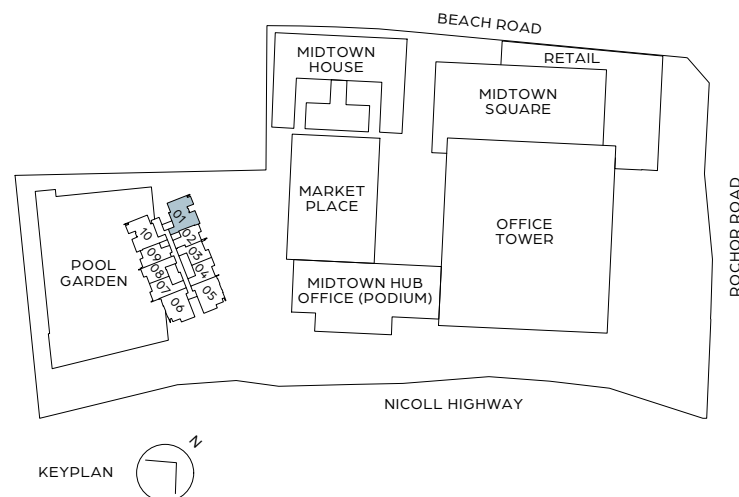
LOWER FLOOR

UPPER FLOOR



LEGEND (WHERE APPLICABLE)

- | | |
|-----------------------------|--------------------------------|
| F – FRIDGE | DB – DISTRIBUTION BOARD |
| WM – WASHING MACHINE | IH – INDUCTION HOB |
| S – STORAGE | SO – STEAM OVEN |



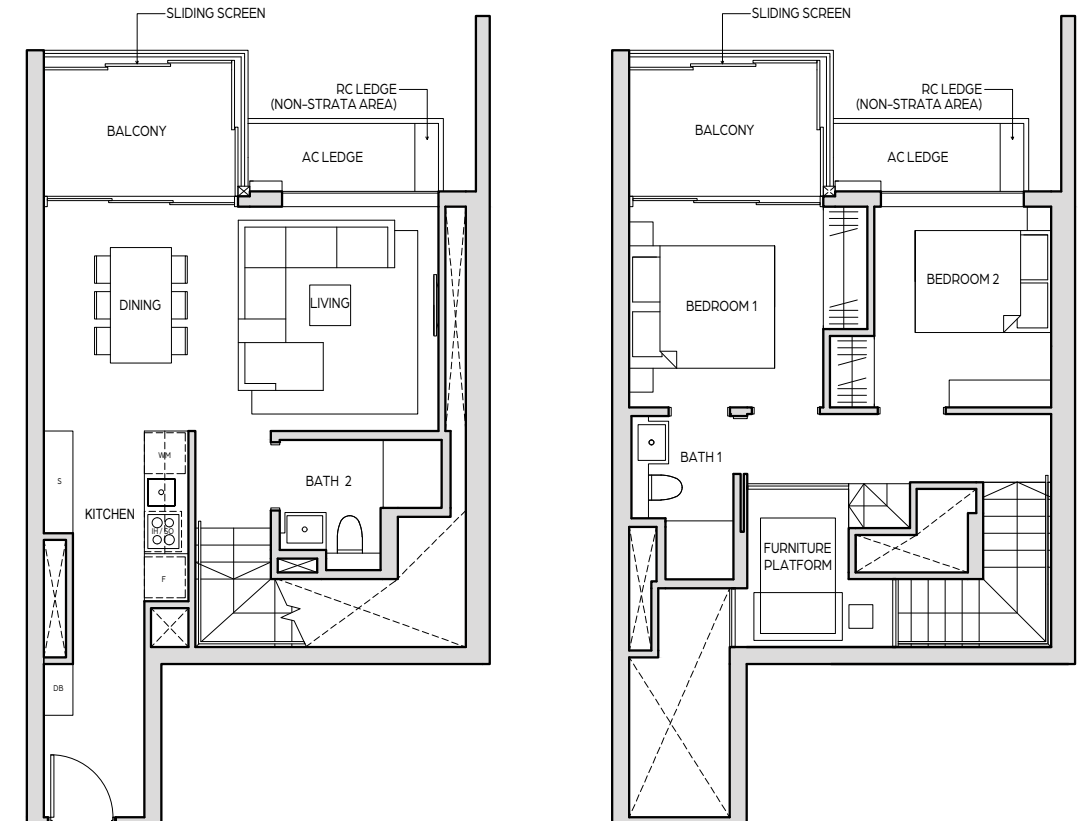
All areas and measurements stated in this floor plan are approximate and subject to final survey. The layout / location of wardrobes, kitchen cabinets and appliances, DB, door swing directions and sanitary wares are subject to final design. BP Approval No. A1606-00001-2018-BP02 dated 10 June 2019

2 BEDROOM DUPLEX

TYPE B3-DP

107 sq m / 1152 sq ft

#26-10 | #28-10 | #30-10 | #32-10



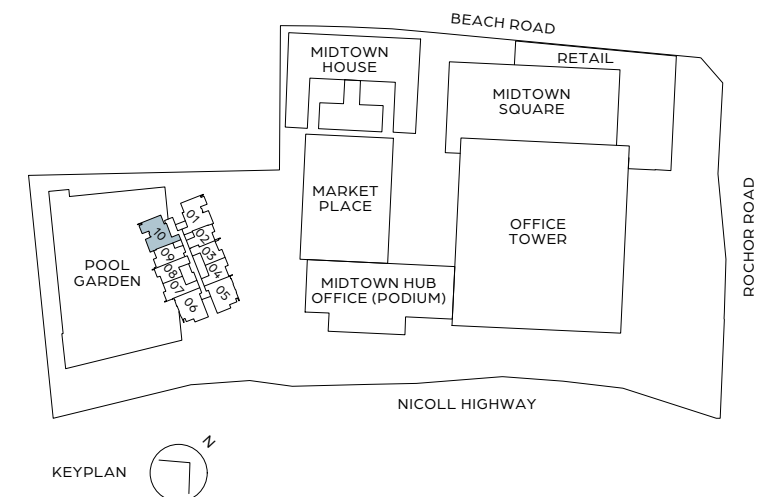
LOWER FLOOR

UPPER FLOOR



LEGEND (WHERE APPLICABLE)

- | | |
|-----------------------------|--------------------------------|
| F – FRIDGE | DB – DISTRIBUTION BOARD |
| WM – WASHING MACHINE | IH – INDUCTION HOB |
| S – STORAGE | SO – STEAM OVEN |



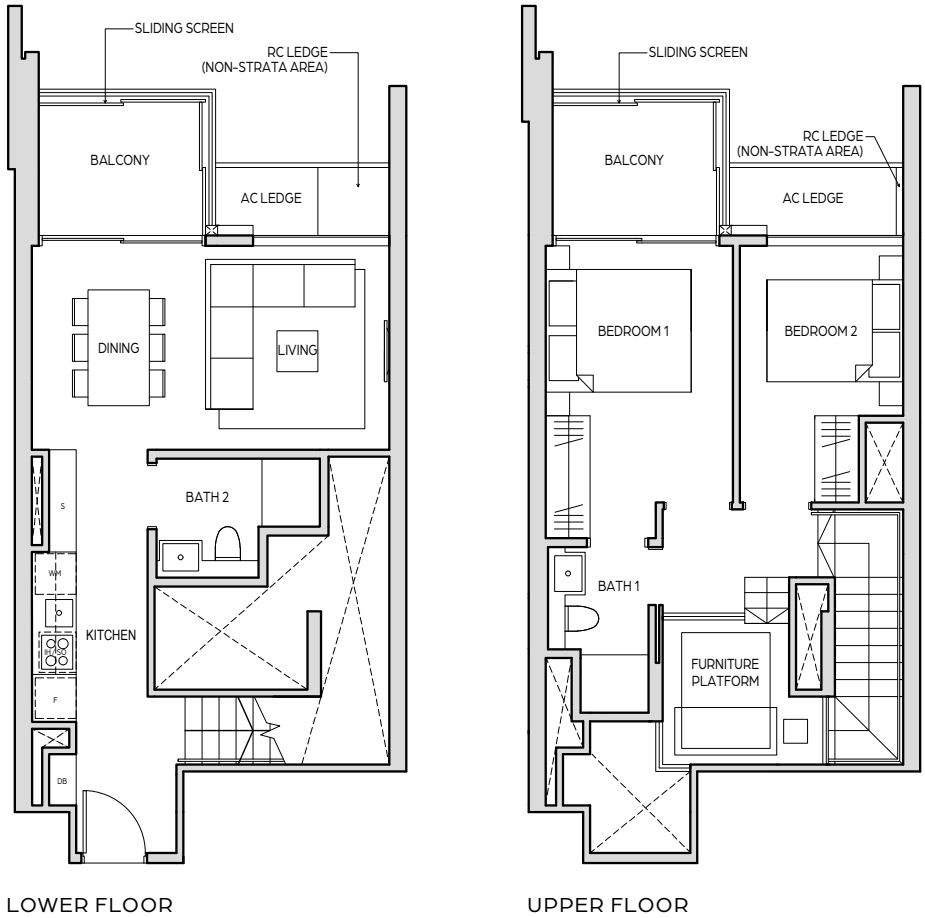
All areas and measurements stated in this floor plan are approximate and subject to final survey. The layout / location of wardrobes, kitchen cabinets and appliances, DB, door swing directions and sanitary wares are subject to final design. BP Approval No. A1606-00001-2018-BP02 dated 10 June 2019

2 BEDROOM DUPLEX

TYPE B4-DP

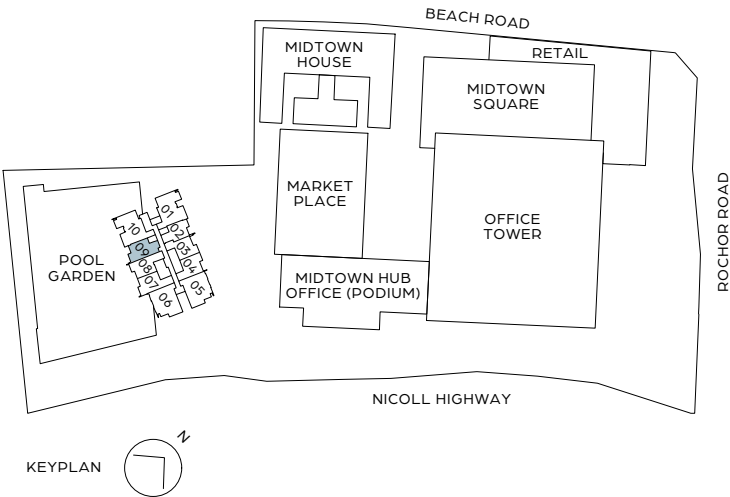
96 sq m / 1033 sq ft

#26-09 | #28-09 | #30-09 | #32-09



LEGEND (WHERE APPLICABLE)

- | | |
|-----------------------------|--------------------------------|
| F - FRIDGE | DB - DISTRIBUTION BOARD |
| WM - WASHING MACHINE | IH - INDUCTION HOB |
| S - STORAGE | SO - STEAM OVEN |



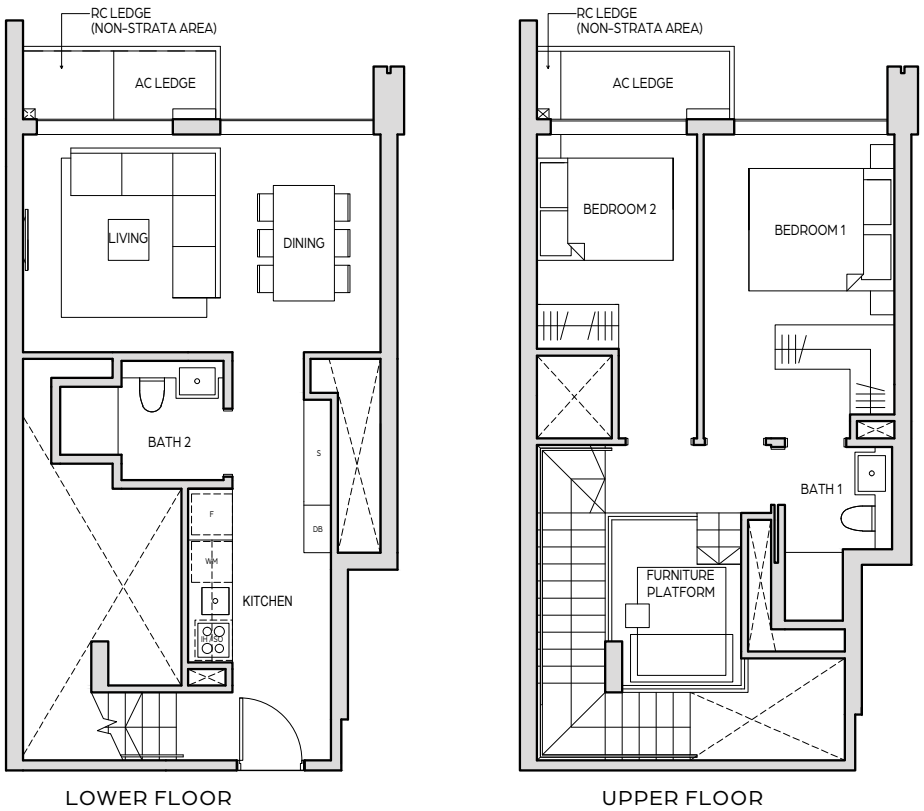
All areas and measurements stated in this floor plan are approximate and subject to final survey. The layout / location of wardrobes, kitchen cabinets and appliances, DB, door swing directions and sanitary wares are subject to final design. BP Approval No. A1606-00001-2018-BP02 dated 10 June 2019

2 BEDROOM DUPLEX

TYPE B5-DP

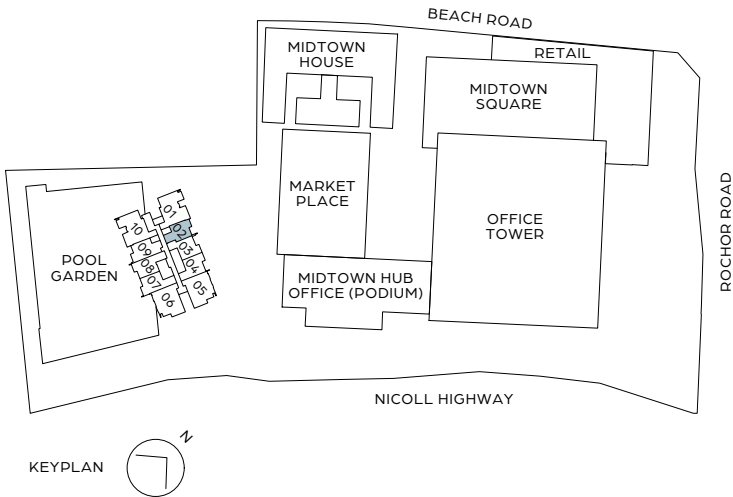
92 sq m / 990 sq ft

#26-02 | #28-02 | #30-02 | #32-02



LEGEND (WHERE APPLICABLE)

- | | |
|-----------------------------|--------------------------------|
| F - FRIDGE | DB - DISTRIBUTION BOARD |
| WM - WASHING MACHINE | IH - INDUCTION HOB |
| S - STORAGE | SO - STEAM OVEN |



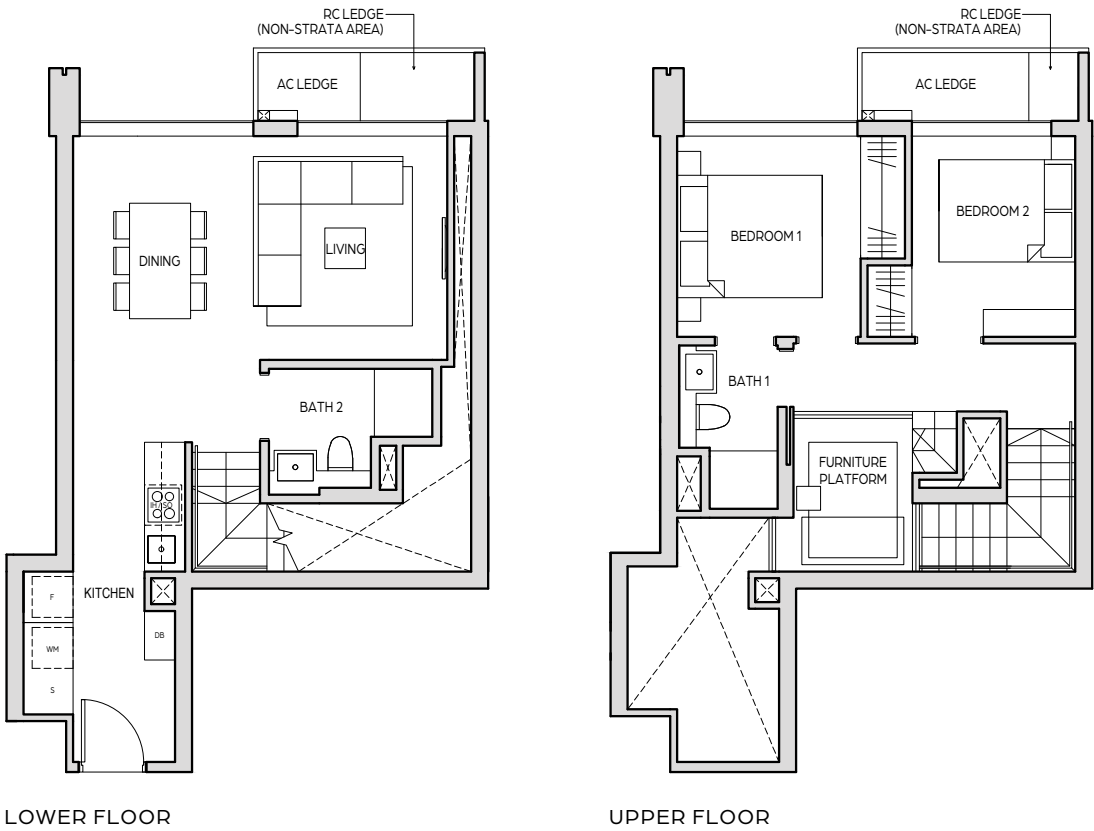
All areas and measurements stated in this floor plan are approximate and subject to final survey. The layout / location of wardrobes, kitchen cabinets and appliances, DB, door swing directions and sanitary wares are subject to final design. BP Approval No. A1606-00001-2018-BP02 dated 10 June 2019

2 BEDROOM DUPLEX

TYPE B6-DP

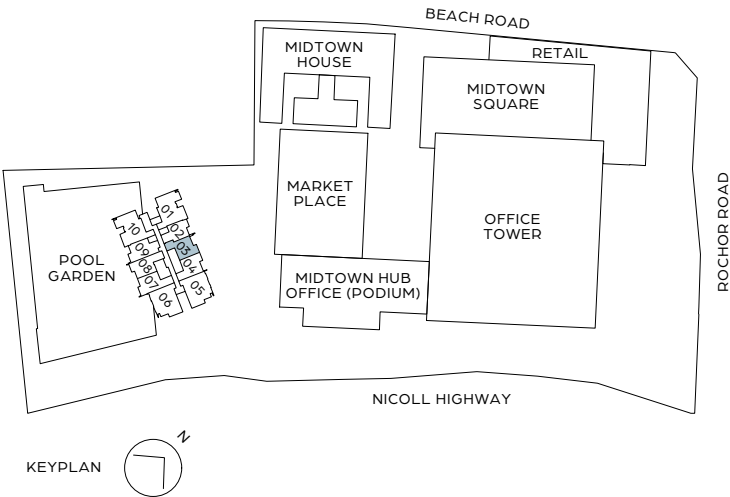
94 sq m / 1012 sq ft

#26-03 | #28-03 | #30-03 | #32-03



LEGEND (WHERE APPLICABLE)

- | | |
|----------------------|-------------------------|
| F - FRIDGE | DB - DISTRIBUTION BOARD |
| WM - WASHING MACHINE | IH - INDUCTION HOB |
| S - STORAGE | SO - STEAM OVEN |



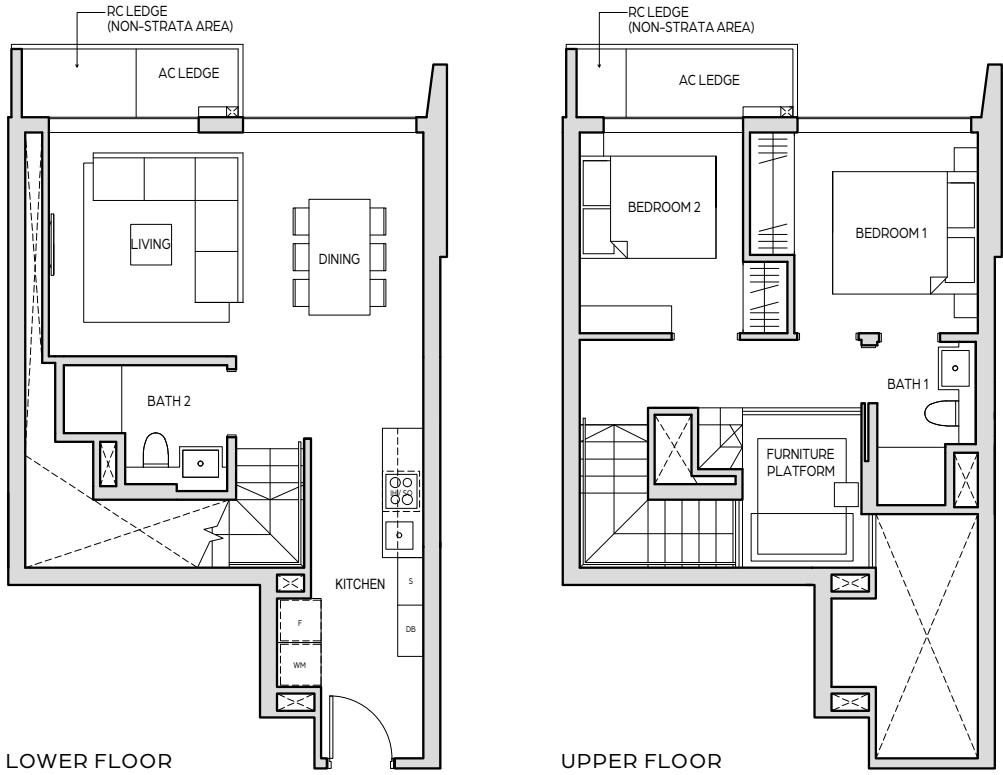
All areas and measurements stated in this floor plan are approximate and subject to final survey. The layout / location of wardrobes, kitchen cabinets and appliances, DB, door swing directions and sanitary wares are subject to final design. BP Approval No. A1606-00001-2018-BP02 dated 10 June 2019

2 BEDROOM DUPLEX

TYPE B6a-DP

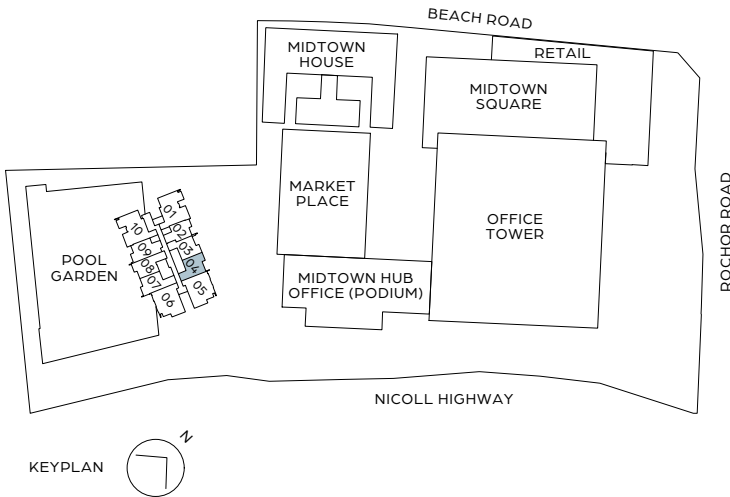
94 sq m / 1012 sq ft

#26-04 | #28-04 | #30-04 | #32-04



LEGEND (WHERE APPLICABLE)

- | | |
|----------------------|-------------------------|
| F - FRIDGE | DB - DISTRIBUTION BOARD |
| WM - WASHING MACHINE | IH - INDUCTION HOB |
| S - STORAGE | SO - STEAM OVEN |



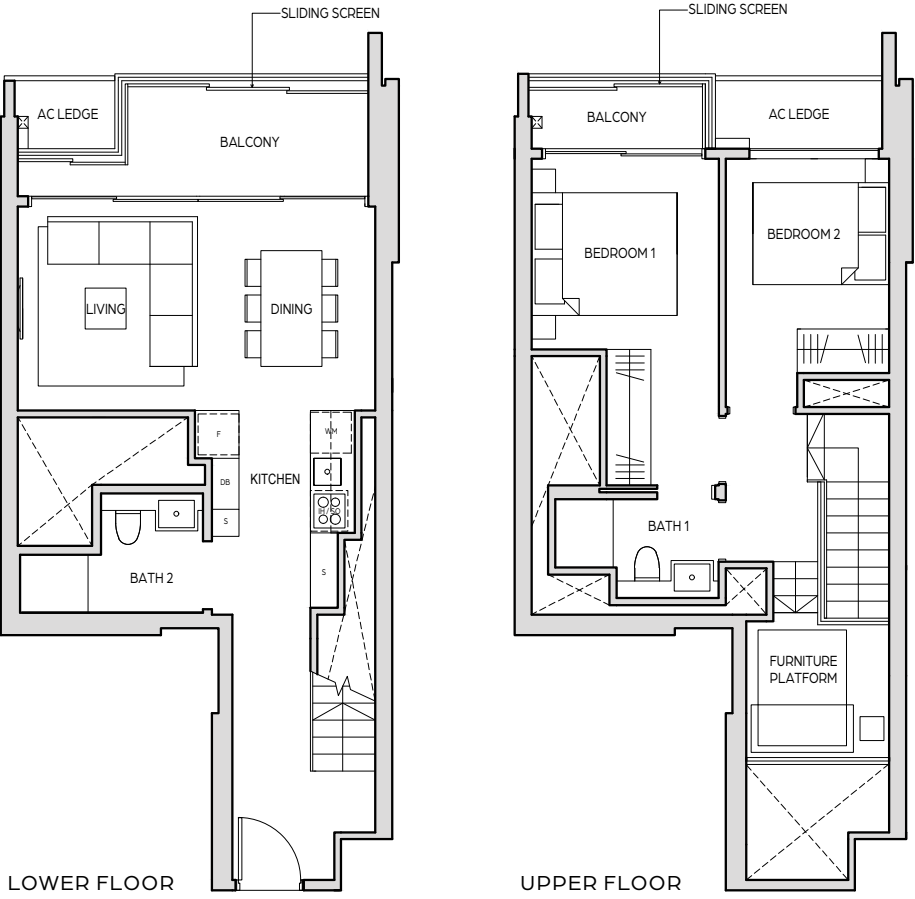
All areas and measurements stated in this floor plan are approximate and subject to final survey. The layout / location of wardrobes, kitchen cabinets and appliances, DB, door swing directions and sanitary wares are subject to final design. BP Approval No. A1606-00001-2018-BP02 dated 10 June 2019

2 BEDROOM DUPLEX

TYPE B7-DP

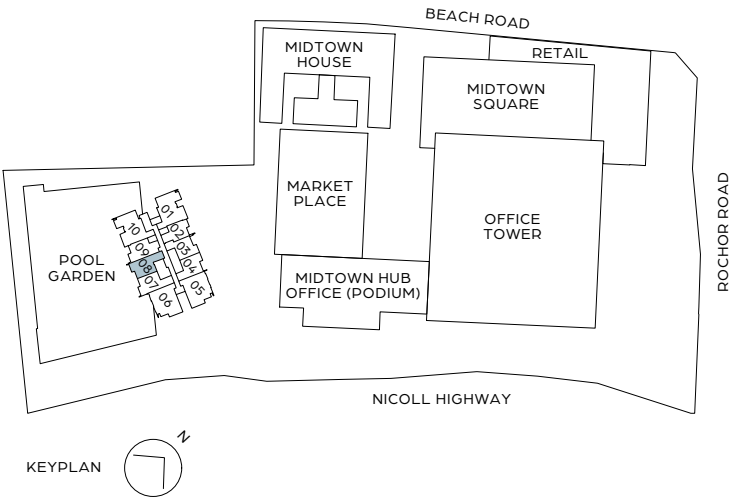
95 sq m / 1023 sq ft

#26-08 | #28-08 | #30-08 | #32-08



LEGEND (WHERE APPLICABLE)

- | | |
|----------------------|-------------------------|
| F - FRIDGE | DB - DISTRIBUTION BOARD |
| WM - WASHING MACHINE | IH - INDUCTION HOB |
| S - STORAGE | SO - STEAM OVEN |



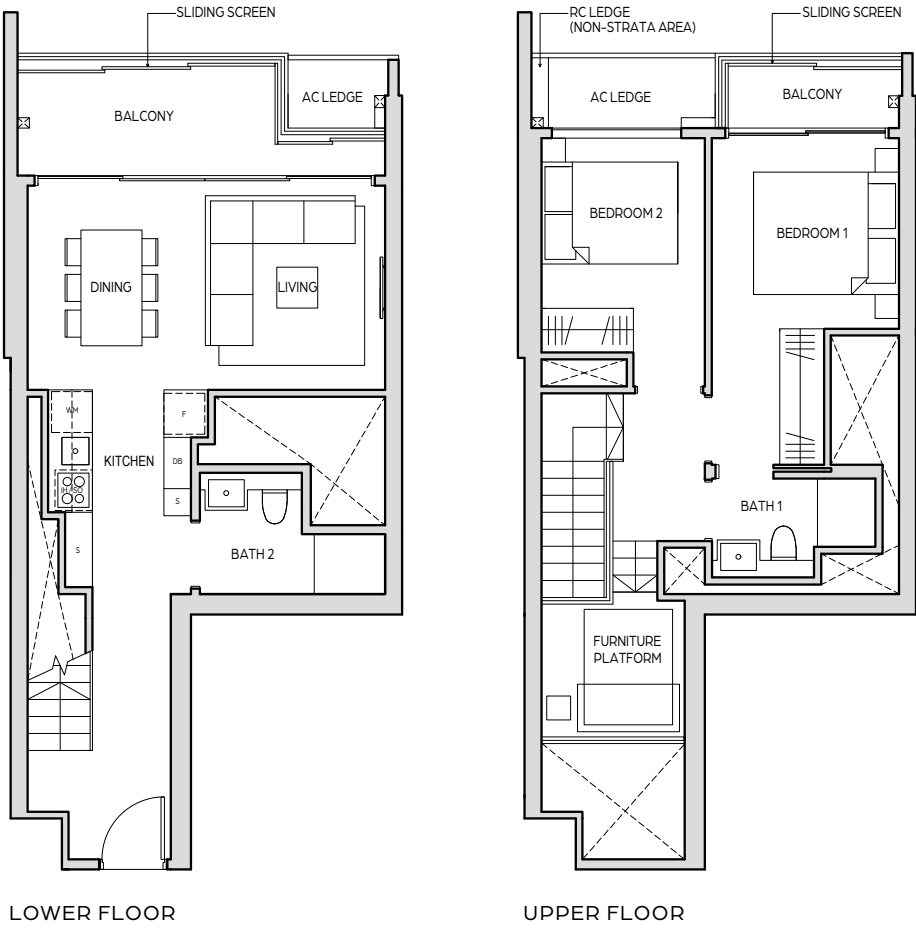
All areas and measurements stated in this floor plan are approximate and subject to final survey. The layout / location of wardrobes, kitchen cabinets and appliances, DB, door swing directions and sanitary wares are subject to final design. BP Approval No. A1606-00001-2018-BP02 dated 10 June 2019

2 BEDROOM DUPLEX

TYPE B7a-DP

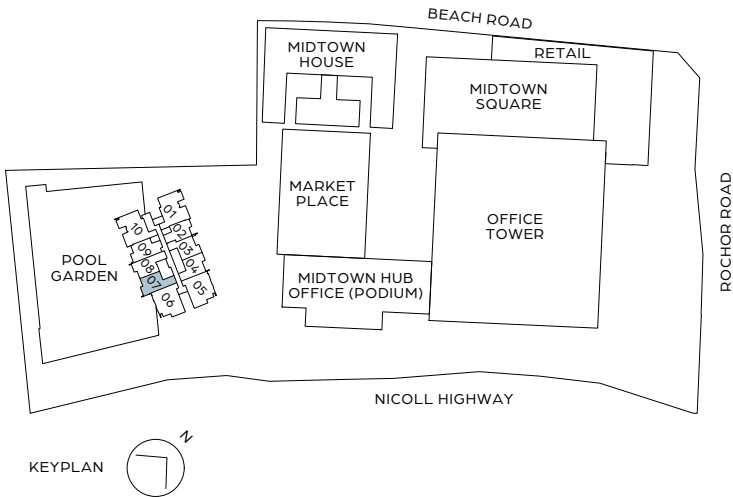
95 sq m / 1023 sq ft

#26-07 | #28-07 | #30-07 | #32-07



LEGEND (WHERE APPLICABLE)

- | | |
|----------------------|-------------------------|
| F - FRIDGE | DB - DISTRIBUTION BOARD |
| WM - WASHING MACHINE | IH - INDUCTION HOB |
| S - STORAGE | SO - STEAM OVEN |



All areas and measurements stated in this floor plan are approximate and subject to final survey. The layout / location of wardrobes, kitchen cabinets and appliances, DB, door swing directions and sanitary wares are subject to final design. BP Approval No. A1606-00001-2018-BP02 dated 10 June 2019

3 BEDROOM DUPLEX

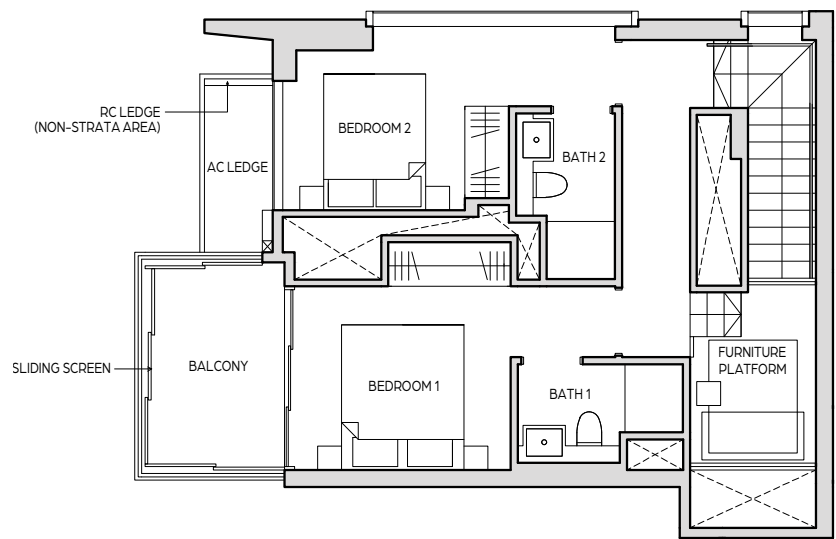
TYPE B1-DP

123 sq m / 1324 sq ft

#26-06 | #28-06 | #30-06 | #32-06



LOWER FLOOR

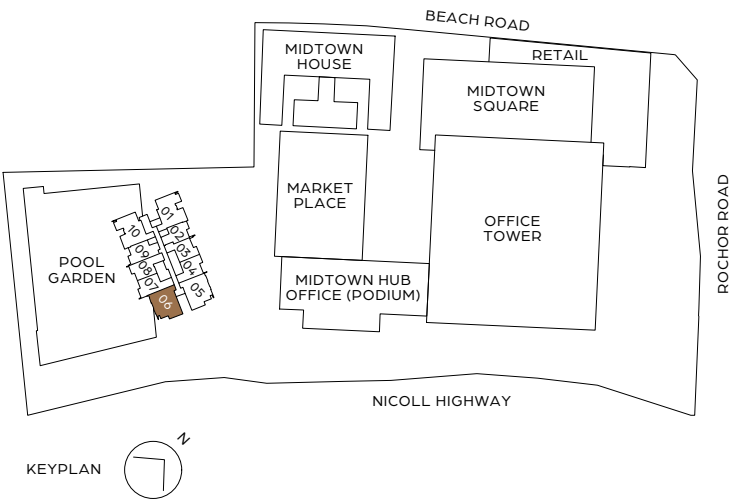


UPPER FLOOR



LEGEND (WHERE APPLICABLE)

- | | |
|----------------------|-------------------------|
| F - FRIDGE | DB - DISTRIBUTION BOARD |
| WM - WASHING MACHINE | IH - INDUCTION HOB |
| S - STORAGE | SO - STEAM OVEN |



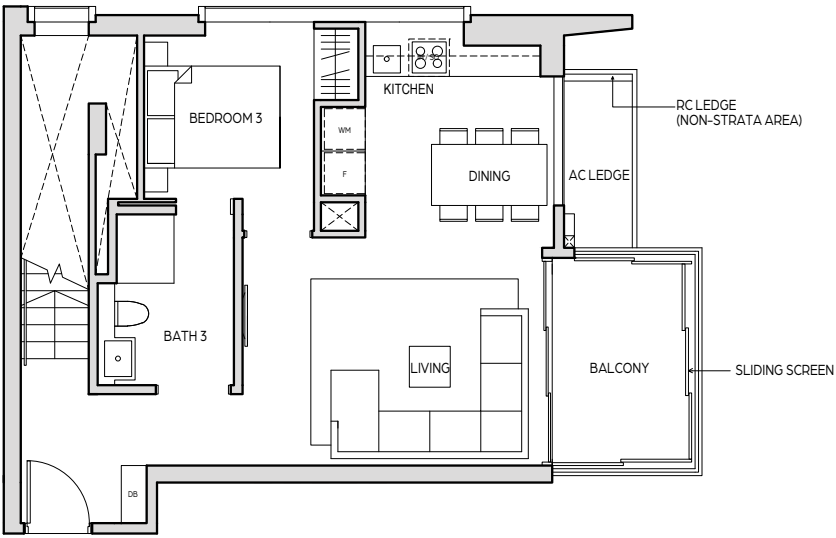
All areas and measurements stated in this floor plan are approximate and subject to final survey. The layout / location of wardrobes, kitchen cabinets and appliances, DB, door swing directions and sanitary wares are subject to final design. BP Approval No. A1606-00001-2018-BP02 dated 10 June 2019

3 BEDROOM DUPLEX

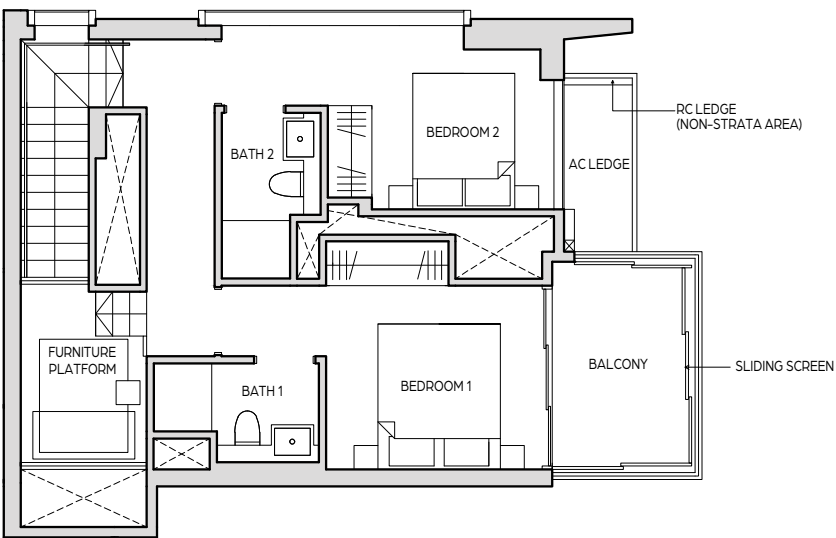
TYPE B1a-DP

123 sq m / 1324 sq ft

#26-05 | #28-05 | #30-05 | #32-05



LOWER FLOOR

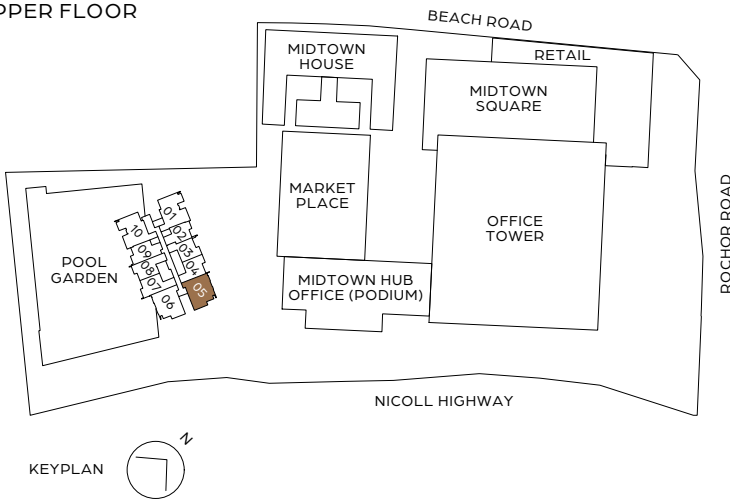


UPPER FLOOR



LEGEND (WHERE APPLICABLE)

- | | |
|----------------------|-------------------------|
| F - FRIDGE | DB - DISTRIBUTION BOARD |
| WM - WASHING MACHINE | IH - INDUCTION HOB |
| S - STORAGE | SO - STEAM OVEN |



All areas and measurements stated in this floor plan are approximate and subject to final survey. The layout / location of wardrobes, kitchen cabinets and appliances, DB, door swing directions and sanitary wares are subject to final design. BP Approval No. A1606-00001-2018-BP02 dated 10 June 2019